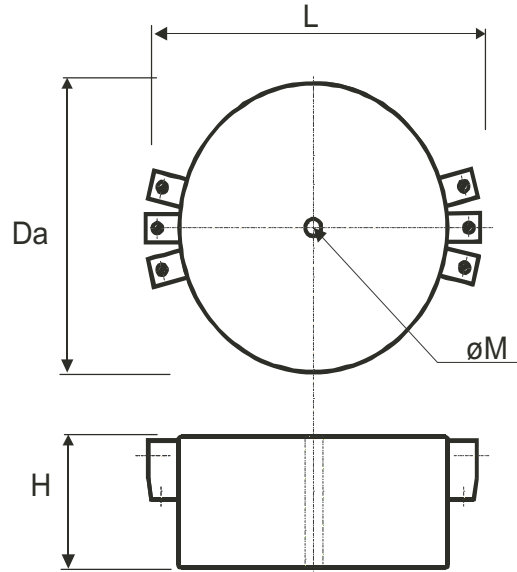
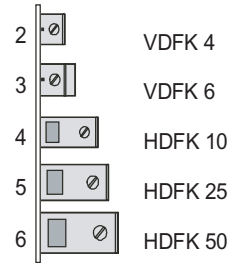


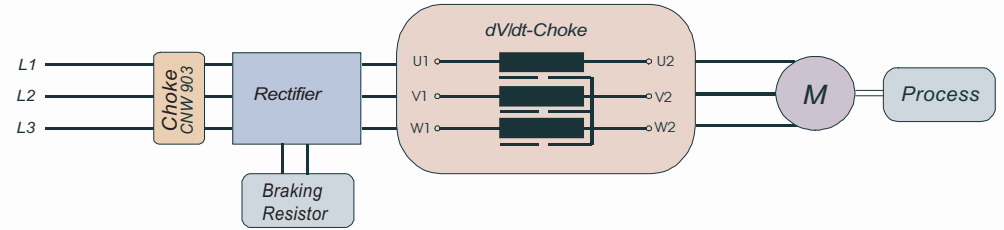
Dimensional Information



Connection

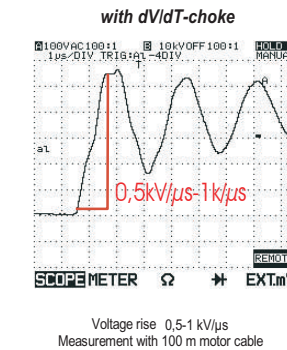
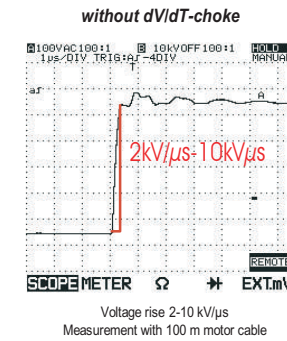


Circuit Diagram



Technical Data

Type	BV No.	Dimensions				Connection	Rated Current [A]	Inductance [mH]	DC Resistance R_{cu} [mΩ]
		L [mm]	H [mm]	$\varnothing D$ [mm]	$\varnothing M$ [mm]				
CHI 831 Q/6/7,5	945150	89	40	67	5,1	2	6	7,5	50
CHI 831 Q/10/4,5	945151	89	40	67	5,1	2	10	4,5	19
CHI 831 Q/16/4,0	945152	110	50	88	5,1	2	16	4,0	12
CHI 831 Q/25/2,5	945153	120	50	88	5,1	3	25	2,5	6,8
CHI 831 Q/36/1,8	945154	120	50	88	5,1	3	36	1,8	3,5
CHI 831 Q/64/1,5	945155	190	66	140	8,2	4	64	1,5	1,5
CHI 831 Q/85/1,2	945156	229	83	151	8,2	5	85	1,2	1
CHI 831 Q/100/0,7	945157	237	83	151	8,2	6	100	0,7	0,7



Rated Voltage 500 V~	Operating Temperature -40 °C...+115 °C
Test voltage $U_p = 2,5 \text{ kV}/50 \text{ Hz}/2 \text{ sec. (Winding)}$	Conforming to EN 138000
Inductive Tolerance +50% -30% bei 10 kHz	Type Encapsulated in plastic casing with terminals

Designed by M Gillam	Approved by S Hughes	Approved Date 10.04.08	File Name CHI831/xx	Issue Date 10.04.08	Scale 1:1
REO REO UK LTD Units 2-4, Callow Hill Road Craven Arms, Shropshire SY7 8NT Tel: 01588 673411 Fax: 01588 672718 email: maln@reo.co.uk www.reo.co.uk			Title dV/dT CHOKE TECHNICALINFORMATION		Sheet 1 of 1
			Drawing Number CHI 831/XX		