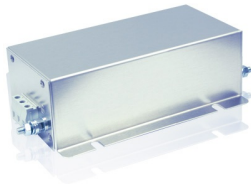


# CNW 114/500

Three-phase mains filters (3 lines)



## Unique Selling Point

- compact construction
- easy installation
- low temperature rise
- touch-proof terminals
- very good attenuation in a wide frequency spectrum
- IT-versions possible
- UL approval for CNW 114/8 up to CNW 114/600 A (doesn't apply to the 690 V version)

## Description

Applications: Frequency converters for motor drives, wind power installations and power supply units

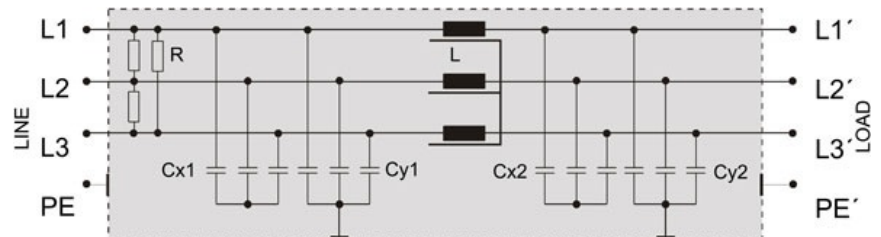
- Conforming to: VDE 0565-3 / IEC 950 / UL 1283
- Test voltage: L-L 2100 V, DC 1s, L-PE 2700 V, DC 1s
- Overload: 1,5 x I 1 min/h
- Climatic category: DIN IEC 68 Teil 1 25/085/21

## Technical Data

- Nominal Voltage : 500 V
- Rated current : 80 - 1200 A

When electronic components are panel-mounted in a cabinet, in the most of the cases the same circuits with different power are required. To avoid permanent modifications of the apertures, several power ranges should ideally be combined. The filters of this series, within the most important power range, have equal fixing dimensions, so that the filters can be replaced.

## Circuit example



# CNW 114/500

Three-phase mains filters (3 lines)

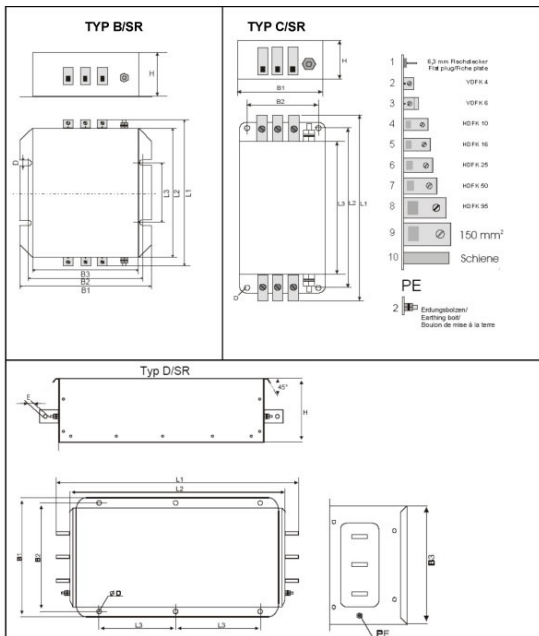
## Technical data

Type	Rated voltage [V]	Rated current [A]	Leakage current [mA]	Cx [μF]	Cy [nF]	L [mH]	R [kOhm]
CNW 114/8		3x8	<16	1,0	0,2	7,6	560
CNW 114/16		3x16	<16	2,5	1,6	5,2	560
CNW 114/25		3x25	<180	2,5	1,6	2,5	560
CNW 114/36		3x36	<180	2,5	1,6	1,5	560
CNW 114/50		3x50	<180	2,5	1,6	0,9	560
CNW 114/64		3x64	<180	2,5	1,6	0,9	560
CNW 114/80	3 x	3x80	<200	3,7	2,4	0,8	560
CNW 114/110	500	3x110	<200	3,7	2,4	0,5	560
CNW 114/180		3x180	<220	3,7	2,4	0,5	560
CNW 114/280		3x280	<260	7,2	4,6	0,3	560
CNW 114/300		3x300	<260	7,2	4,6	0,3	560
CNW 114/450		3x450	<760	7,6	4,75	0,11	560
CNW 114/600		3x600	<760	7,6	4,75	0,11	560
CNW 114/900		3x900	<760	7,6	4,75	0,05	560
CNW 114/1200		3x1200	<760	7,6	4,75	0,05	560

# CNW 114/500

Three-phase mains filters (3 lines)

## Dimensions



Type	Housing	Connection	PE-Connection	B1 [mm]	B2 [mm]	B3 [mm]	D [mm]	E [mm]	H [mm]	L1 [mm]	L2 [mm]	L3 [mm]
CNW 114/8	B/SR	Terminals 4 mm <sup>2</sup>	Earthing bolt (M6)	115	100	85	6,2	-	60	202	180	115
CNW 114/16	B/SR	Terminals 4 mm <sup>2</sup>	Earthing bolt (M6)	150	136	120	6,2	-	65	222	200	115
CNW 114/25	B/SR	Terminals 6 mm <sup>2</sup>	Earthing bolt (M6)	150	136	120	6,2	-	65	229	200	115
CNW 114/36	B/SR	Terminals 10 mm <sup>2</sup>	Earthing bolt (M6)	150	136	120	6,2	-	65	229	200	115
CNW 114/50	B/SR	Terminals 10 mm <sup>2</sup>	Earthing bolt (M6)	150	136	120	6,2	-	65	229	200	115
CNW 114/64	B/SR	Terminals 16 mm <sup>2</sup>	Earthing bolt (M6)	150	136	120	6,2	-	65	238	200	115
CNW 114/80	C/SR	Terminals 25 mm <sup>2</sup>	Earthing bolt (M10)	170	130	-	8,5	-	90	400	373	350
CNW 114/110	C/SR	Terminals 50 mm <sup>2</sup>	Earthing bolt (M10)	170	130	-	8,5	-	90	400	373	350
CNW 114/180	C/SR	Terminals 95 mm <sup>2</sup>	Earthing bolt (M10)	180	156	-	10,0	-	115	510	470	360
CNW 114/280	C/SR	Terminals 150 mm <sup>2</sup>	Earthing bolt (M10)	260	220	-	12,0	-	130	700	660	530
CNW 114/300	C/SR	Terminals 150 mm <sup>2</sup>	Earthing bolt (M10)	260	220	-	12,0	-	130	700	660	530
CNW 114/450	D/SR	Bars (25x8)	Earthing bolt (M12)	300	275	250	9,0	10,5	160	610	516	210
CNW 114/600	D/SR	Bars (30x8)	Earthing bolt (M12)	300	275	250	9,0	10,5	160	630	516	210
CNW 114/900	D/SR	Bars (50x10)	Earthing bolt (M12)	300	275	250	9,0	13,0	160	716	516	210
CNW 114/1200	D/SR	Bars (60x10)	Earthing bolt (M12)	300	275	250	9,0	13,0	160	716	516	210

# CNW 114/500

Three-phase mains filters (3 lines)

## Insertion loss

