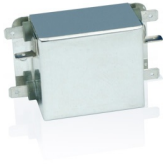


CNW 102

Single-phase mains filters (2 lines, two-stages)



Unique Selling Point

- compact construction
- easy installation
- touch-proof if used with insulated spade connectors
- very good damping performance at a low leakage current
- also as a medical version or with a lower leakage current available
- optional with overvoltage protection
- UL approval for the complete model range - E217177 (except N- and MED-versions)

Description

Applications: Switch-mode power supplies for industrial electronics, frequency converters for motor drives, power supply units, medical and telecommunication applications, DC applications

- Conforming to: VDE 0565-3 / IEC 950 / UL 1283
- Test voltage: L-N 2100 V, DC 1s, L/N-PE 2700 V, DC 1s
- Overload: 1,5 x I 1 min/h
- Climatic category: DIN IEC 68 Teil 1 25/085/21

Technical Data

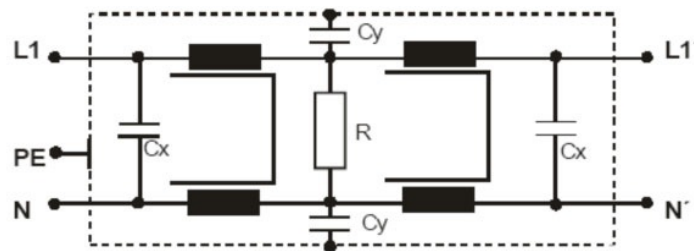
- Nominal Voltage : 250 V
- Rated current : 3 - 20 A

Recommended filter for suppressing interference according to EN 55011, Class A and EN 61800-3, category C2. Low-cost filter with small dimensions and very good damping performance for the direct installation in a case on the interference source.

The filter is also as a version with low leakage current as well as special medical version (no Y capacitors) available. Optionally, the filter can be delivered with overvoltage protection.

The connection with insulated spade connections enables a fast assembly. Also other versions with different connections (like clamp or braid) are possible.

Circuit example



CNW 102

Single-phase mains filters (2 lines, two-stages)

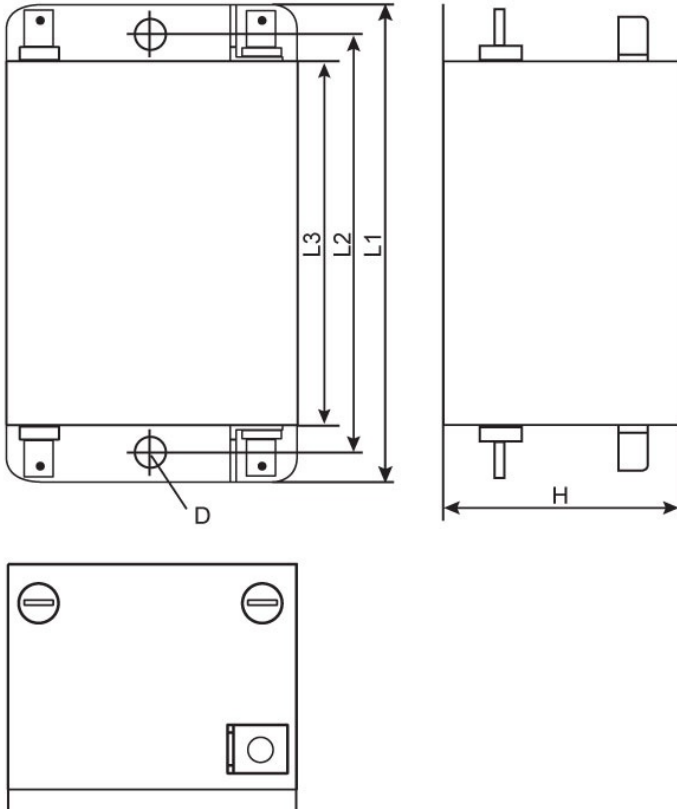
Technical data

Type	Rated voltage [V]	Rated current [A]	Leakage current [mA]	Cx [μF]	Cy [nF]	L [mH]	R [kOhm]
CNW 102/3	250	3	<3,5	0,94	20	13,6	560
CNW 102/6		6	<3,5	0,94	20	7,8	560
CNW 102/10		10	<3,5	0,94	20	3,6	560
CNW 102/16		16	<3,5	0,94	20	2,4	560
CNW 102/20		20	<3,5	0,94	20	2,0	560
CNW 102/3/N		3	<0,5	0,94	4,4	13,6	560
CNW 102/6/N		6	<0,5	0,94	4,4	7,8	560
CNW 102/10/N		10	<0,5	0,94	4,4	3,6	560
CNW 102/16/N		16	<0,5	0,94	4,4	2,4	560
CNW 102/20/N		20	<0,5	0,94	4,4	2,0	560
CNW 102/3/MED		3	<0,005	0,94	-	13,6	560
CNW 102/6/ MED		6	<0,005	0,94	-	7,8	560
CNW 102/10/ MED		10	<0,005	0,94	-	3,6	560
CNW 102/16/ MED		16	<0,005	0,94	-	2,4	560
CNW 102/20/ MED		20	<0,005	0,94	-	2,0	560

CNW 102

Single-phase mains filters (2 lines, two-stages)

Dimensions



Type	Connection	PE-Connection	Dimensions					
			B mm	D mm	H mm	L 1 mm	L 2 mm	L 3 mm
CNW 102/3	6,3x0,8mm flat plug	6,3x0,8mm flat plug	50	5,3	40	87	75	65
CNW 102/6	6,3x0,8mm flat plug	6,3x0,8mm flat plug	50	5,3	40	87	75	65
CNW 102/10	6,3x0,8mm flat plug	6,3x0,8mm flat plug	50	5,3	40	87	75	65
CNW 102/16	6,3x0,8mm flat plug	6,3x0,8mm flat plug	53	5,3	40	110	100	90
CNW 102/20	6,3x0,8mm Flachstecker	6,3x0,8mm Flachstecker	53	5,3	40	110	100	90

CNW 102

Single-phase mains filters (2 lines, two-stages)

Insertion loss

