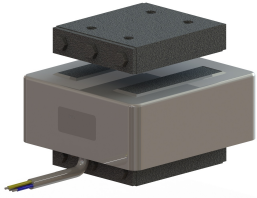


REOVIB WI 721

AC-Magnet, powder-coated



Unique Selling Point

- Corrosion protection by means of powder-coating
- FDA compliant
- Optimal size/performance ratio
- Good adjustability
- Maximum power 3900 VA
- Also for low frequency applications
- Maximum tractive power 6900 N
- Low Profile

Description

Applications:

- Packaging industry and weighing sector for feeding and sorting processes
- Automation process and assembly equipment which utilizes electromagnetic drives.

Particularly suited for the food processing sector and the pharmaceutical sector (FDA compliant)

Technical Data

- Max. Nominal air gap : 3 mm
- Power at 3000 1/min : 280 VA - 3900 VA
- Power at 6000 1/min : 320 VA - 2200 VA

REOVIB WI 721

AC-Magnet, powder-coated

Technical data

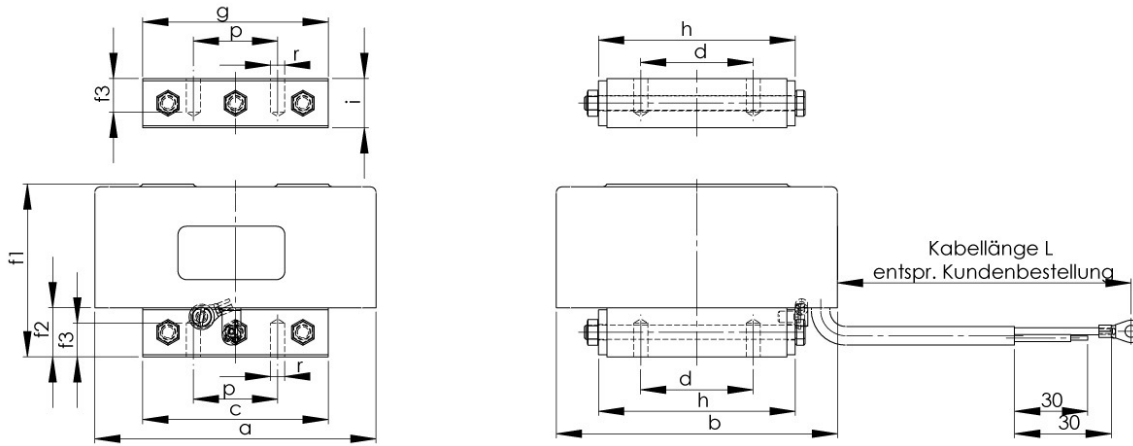
Vibration frequency 3000 / 6000 1/min

Types	Maximum rated air gap [mm]	Power at 6000 1/min [VA]	Rated current = thermal rated current at 230V [A]	Peak tensile force at nominal air gap [N]	Power at 3,000 1/min [VA]	Therm. rated current at 230V [A]	Peak tensile force at nominal air gap [N]	Weight [kg]	
								Magnet	Armature
REOVIB WI 721/10	2.5	320	1.4	230	280	1.2	229	2.1	0.34
REOVIB WI 721/12	3	450	1.95	330	425	1.85	318	2.8	0.62
REOVIB WI 721/14	3	1,200	5.2	850	1,200	5.2	1,410	6.9	1.45
REOVIB WI 721/16	3	2,200	9.5	1,590	1,890	8.2	2,620	10.5	2.6
REOVIB WI 721/18	3	--	-	--	3,900	16.9	6,900	28	9
Compatible REOVIB-Devices:	REOVIB SMART, REOVIB RTS, REOVIB MTS, REOVIB MFS								

REOVIB WI 721

AC-Magnet, powder-coated

Maßbild



Types	a	b	c	d	f1	f2	f3	g	h	i	p	r
REOVIB WI 721/10	100	68	67	-	62,5	12,5	9	67	39	18,5	30	M6
REOVIB WI 721/12	100	100	67	40	62,5	15,5	9	67	71	18,5	30	M6
REOVIB WI 721/14	155	110	109	-	91,5	23,5	15	109	69	27,5	50	M10
REOVIB WI 721/16	155	168	109	80	91,5	23,5	15	109	127	27,5	50	M10
REOVIB WI 721/18	230	170	170	65	129,5	42,5	18	170	121	48,5	75	M12