

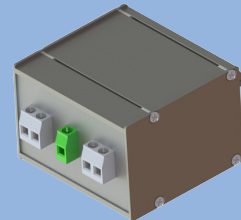
REO PLC- and Trap circuit filters
for the use with Powerline Communication (PLC) disturbance

REO PLC and trap circuit filters are designed for the use in networks with ripple control technology or Powerline Communication (PLC). Hereby, high-frequent signals of our 50 Hz voltage are superimposed. Due to multiple use of existing lines, these transmission methods can be realized very fast and cost-effectively.

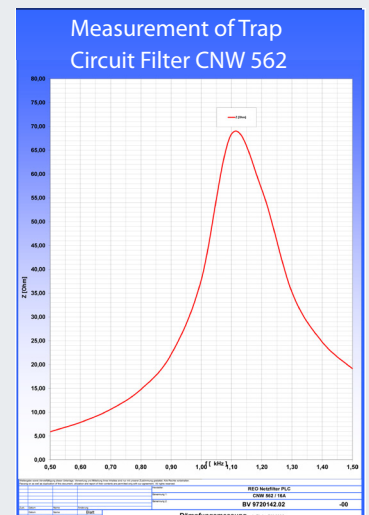
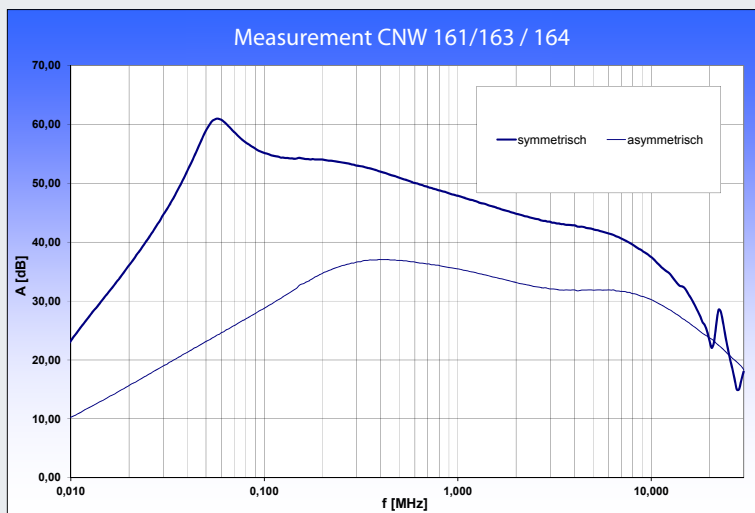
High-frequent PLC signals may cause disturbance of consumers. For example, these can affect electrical consumers such as LED lighting or other comparable consumers. Further, the radiation of high-frequent signals via power lines reduces.

Applications

- Ripple control technology
- Powerline Communication (PLC) disturbance
- Intelligent Meter (Smart Meter)
- Disturbance of LED lighting by PLC signals
- Interfering noise on Audio and Video devices
- RFID (radio-frequency identification) applications



The PLC filter ranges CNW 161 and CNW 163 are designed broadband and have a 10 kHz to 20 MHz attenuation range. The trap circuit filter CNW 562 is designed for filtering of low-frequent disturbances in the 200 Hz to 5 kHz range and direct conceived on the PLC frequency.



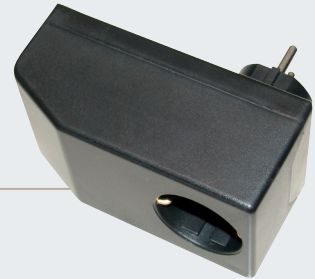
CNW 161

Using Filter CNW 161 signals in the frequency range of 10 kHz to 20 MHz are filtered.

Technical Data*

Line current	16	[A]
Line voltage	250	[V]

*also available with connector type J (Switzerland).

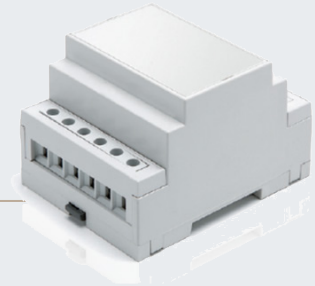


CNW 163

With this Filter CNW 163 signals in the frequency range of 10 kHz to 20 MHz are filtered. Designed for top-hat rail mounting.

Technical Data

Rated current	16-25	[A]
Rated voltage	250	[V]

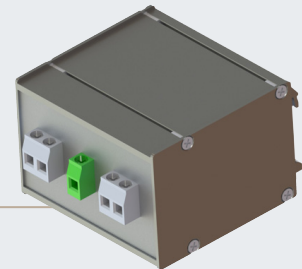


CNW 562/16

This trap circuit filter precisely filters in particular low-frequency signals. Designed for top-hat rail mounting.

Technical Data

Rated current	16	[A]
Rated voltage	250	[V]
Possible frequencies	250-1,6 k	[Hz]

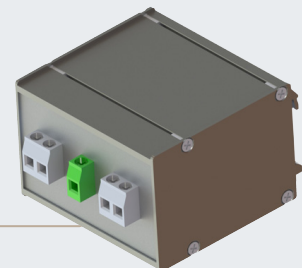


CNW 561/16

Perfect for use in industrial applications. The enclosure perfectly fits into the cabinet.

Technical Data

Rated current	16	[A]
Rated voltage	250	[V]

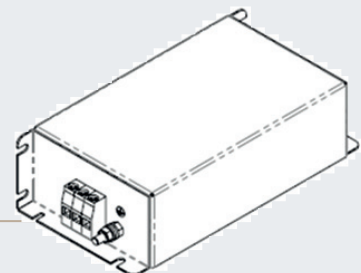


CNW 164

The three-phase filter for high power.

Technical Data

Rated current	6-25 (depending on type)	[A]
Rated voltage	480	[V]





REO AG

Brühler Straße 100 · D-42657 Solingen
Tel.: +49 (0)212 8804 0 · Fax: +49 (0)212 8804 188

E-Mail: info@reo.de
Internet: www.reo.de

■ Divisions:

REO Vibratory Feeding and Power Electronics Division

REO Vibratory Feeding and Power Electronics Division
Brühler Straße 100 · D-42657 Solingen
Tel.: +49 (0)212 8804 0 · Fax: +49 (0)212 8804 188
E-Mail: info@reo.de

REO Train Technologies Division

REO Train Technologies Division
Erasmusstraße 14 · D-10553 Berlin
Tel.: +49 (0)30 3670236 0 · Fax: +49 (0)30 3670236 10
E-Mail: zentrale.berlin@reo.de

REO Drives Division

REO Drives Division
Holzhausener Straße 52
D-16866 Kyritz
Tel.: +49 (0)33971 485 0 · Fax: +49 (0)33971 485 90

E-Mail: info@reo.de

REO Medical and Current Transformer Division

REO Medical and Current Transformer Division
Schulholzinger Weg 7 · D-84347 Pfarrkirchen
Tel.: +49 (0)8561 9886 0 · Fax: +49 (0)8561 9886 40
E-Mail: info@reo.de

REO Test and PowerQuality Division

REO Test and PowerQuality Division
Brühler Straße 100 · D-42657 Solingen
Tel.: +49 (0)212 8804 0 · Fax: +49 (0)212 8804 188
E-Mail: info@reo.de

PRODUCTION + SALES:

■ China

REO Shanghai Inductive Components Co., Ltd
No. 536 ShangFeng Road · Pudong, 201201 Shanghai · China
Tel.: +86 (0)21 5858 0686 · Fax: +86 (0)21 5858 0289
E-Mail: info@reo.cn · Internet: www.reo.cn

■ India

REO GPD INDUCTIVE COMPONENTS PVT. LTD
2/202 Luna Road · Village Luna · Taluka Padra
Vadodara - 391440 · India
Tel.: +91 (2662) 221723, +91 (265) 2396148 · Fax: +91 (265) 2396971
E-Mail: info@reogpd.com · Internet: www.reo-ag.in

■ USA

REO-USA, Inc.
8450 E. 47th St · USA-Indianapolis, IN 46226
Tel.: +1 (317) 899 1395 · Fax: +1 (317) 899 1396
E-Mail: info@reo-usa.com · Internet: www.reo-usa.com

SALES:

■ France

REO VARIAC S.A.R.L.
ZAC Du Clos aux Pois 1 · 6/8 rue de la Closerie-LISSES · F-91048 Evry Cédex
Tel.: +33 (0)1 6911 1898 · Fax: +33 (0)1 6911 0918
E-Mail: reovariac@reo.fr · Internet: www.reo.fr

■ Great Britain

REO (UK) Ltd.
Units 2-4 Callow Hill Road · Craven Arms · Shropshire SY7 8NT · UK
Tel.: +44 (0)1588 673 411 · Fax: +44 (0)1588 672 718
E-Mail: main@reo.co.uk · Internet: www.reo.co.uk

■ Italy

REO ITALIA S.r.l.
Via Treponti, 29 · I-25086 Rezzato (BS)
Tel.: +39 030 279 3883 · Fax: +39 030 279 0600
E-Mail: info@reitalia.it · Internet: www.reitalia.it

■ Poland

REO CROMA Sp. z o.o.
ul. Pozaryskiego 28, bud 20 · PL-04-703 Warszawa
Tel.: +48 (0)22 812 3066 · Fax: +48 (0)22 815 6906
E-Mail: croma@croma.com.pl · Internet: www.croma.com.pl

■ Spain

REO ESPAÑA 2002 S.A.
C/Manuel Ventura i Campeny 21B · local 9 · E-08339 Vilassar de Dalt (Barcelona)
Tel.: +34 937 509 994 · Fax: +34 937 509 995
E-Mail: info@reospain.com · Internet: www.reospain.com

■ Switzerland

REO ELEKTRONIK AG
Im Halbiacker 5a · CH-8352 Elsau
Tel.: +41 (0)52 363 2820 · Fax: +41 (0)52 363 1241
E-Mail: info@reo.ch · Internet: www.reo.ch

■ Turkey

REOTURKEY ELEKTRONIK San. ve Tic. Ltd. Şti.
Halil Rifatpasa Mah. · Darülcenze CD Perpa Tic Merkezi
B Blok Kat 8 No:1095 · TR-34384 Sisli – Istanbul
Tel.: +90 (0)212 2215 118 · Fax: +90 (0)212 2215 119
E-Mail: info@reo-turkey.com · Internet: www.reo-turkey.com